



Scan With Aldelo Express App

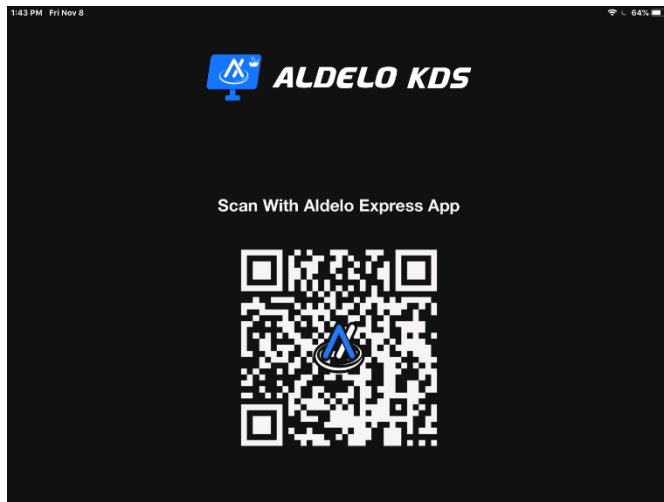




# Aldelo Express Kitchen Display Quick Setup Guide

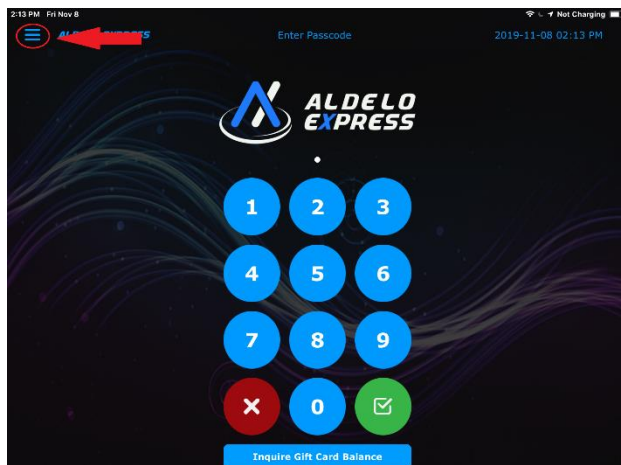
## Before you start

- You must be a subscriber to the Aldelo Express Kitchen Display App. This is not automatic and will require you to purchase this subscription or have this as part of your merchant services package. You can email [sales@aldelo.com](mailto:sales@aldelo.com) if you are unsure. Please include your Aldelo Express subscriber ID and registered business name when emailing.
- Download the Aldelo Express Kitchen Display software from the Apple App Store.
- The Aldelo Express kitchen Display requires a separate iPad from the one using the Aldelo Express.
- You will need to have an active internet connection and your Bluetooth turned on for both the iPads before you begin the integration.



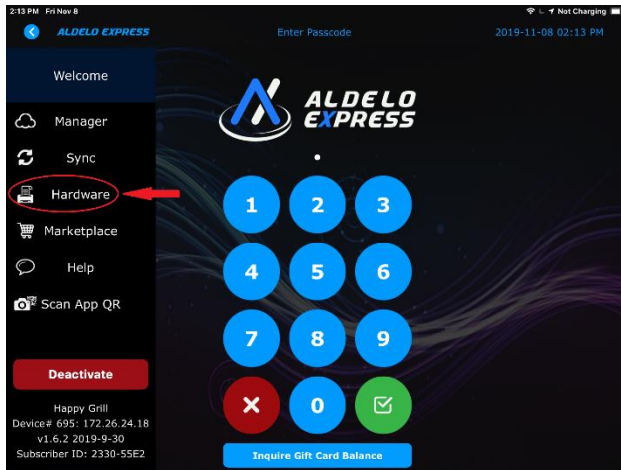
- 1) Launch the Aldelo Express Kitchen Display software.
- 2) From the Main Screen you will have an activation bar code that is displayed
- 3) Open the Aldelo Express on the second iPad
- 4) Select the menu key at the top of the page, then select the "Scan QR Code" option and scan the QR code on the Aldelo Express Customer Display. The Aldelo Express will ask you to complete the integration from the Aldelo Express Kitchen Display.
- 5) The Aldelo Express Customer Display will Allow you to choose a Device number so this device can be configured on the cloud
- 6) You will also need to select a Kitchen Display Number, This number is used to identify this KDS when Configuring Menu items, or connecting the KDS to the Aldelo Express.

Please note, the device number is to help you with customizing settings from the cloud so you can identify the device and its corresponding Point of sale easily. For this purpose, it is a best practice to make them in corresponding numbering groups. For example, you might make the POS stations device number 100, 101, 102 and the Kitchen displays 300, 301, 302. This way you know that POS 100 and customer display 200 work together. You can organize devices any way you like, as long as you know what devices are paired together.

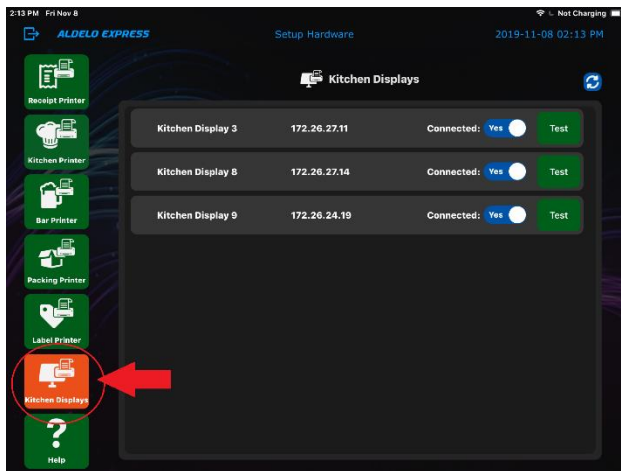


From the Aldelo Express Point of Sale.

- 1) Click on the menu



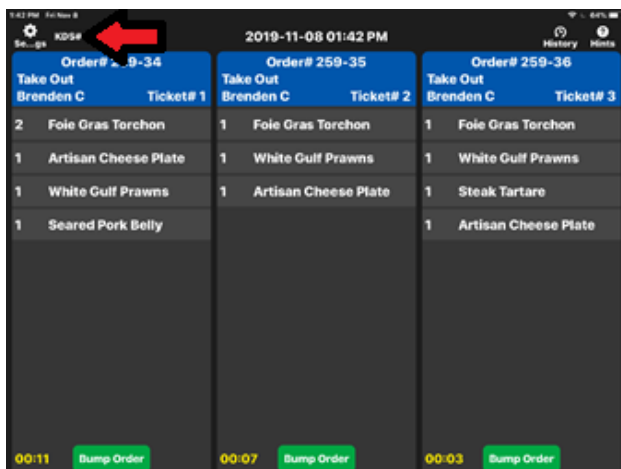
2) Select Hardware



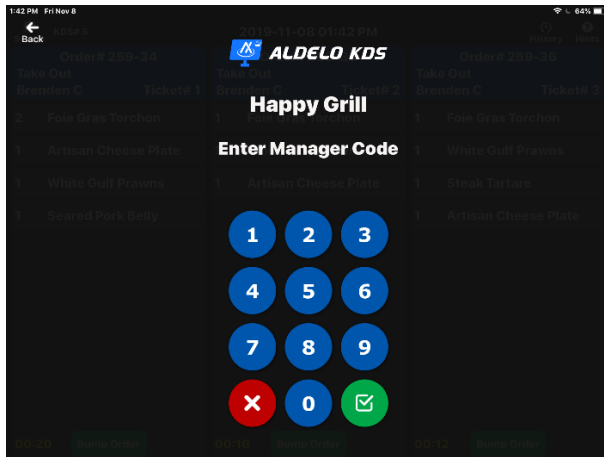
3) Select Kitchen Display. For each Kitchen Display that will be used by this station you will need to select the the "connected" toggle and choose "Yes"

4) Click Test on each KDS and you should see a test message appear on the corresponding KDS

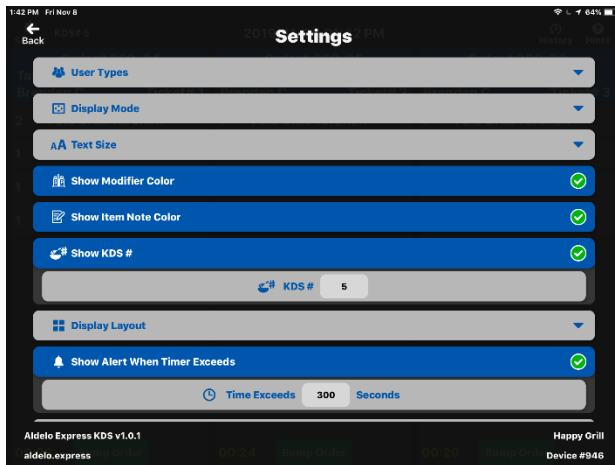
Your basic Aldelo Express KDS is completed



From the Aldelo Express KDS, Swipe right and Select the Settings icon



Login using your Aldelo Express Managers Access Code



### User Types

**Line Cook**, This will be the default choice and the setting used for most iPads.

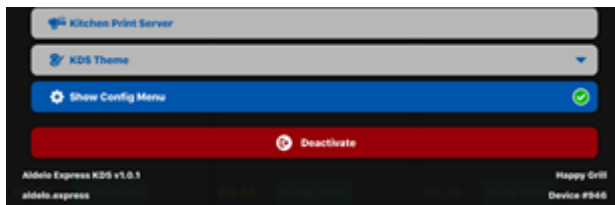
**Expeditor**, This is the person at the pass that is responsible to the flow of the kitchen, this display will show orders that are ready to be check and sent to the front.

### Display Mode

**Traditional Mode**, Shows each order in its entirety

**Consolidated Mode**, Shows Ordered Items individually

**Text Size**, allows you to adjust the order Items text Size



**Show Modifier Color, Show item Note Color, Show KDS Number** are toggles that allow you choose to turn these features on or off

**KDS #**, Allows you to change the KDS Station Number

**Kitchen Print Server**, Allows you to choose an Aldelo Express Point of Sale Station that will handle Print Jobs that are Printed to the kitchen in conjunction with KDS orders.

**KDS Theme**, Allows you to toggle between light or dark theme

**Show Config Menu**, allow you to toggle on or off the ability to show the KDS settings icon above the KDS menu

**Deactivate**, Allows you to deactivate the KDS software